

Seng Kang Primary School



2025 Primary One Orientation Booklet



Content Page

➤ <u>School Vision, Mission and Values</u> -----	1
➤ <u>Learning Dispositions</u> -----	2
➤ <u>General Information</u> -----	3-5
○ <u>School Hours</u>	
○ <u>Arrival Procedures</u>	
○ <u>Dismissal Procedure</u>	
○ <u>Recess and Snack Break</u>	
➤ <u>Communications</u> -----	6-7
➤ <u>Preparing for School</u> -----	8-9
➤ <u>Tips for Parents on Transition to P1</u> -----	10-12
➤ <u>School Gates Operating Hours</u> -----	13
➤ <u>School Uniform and PE Attire</u> -----	14
➤ <u>Purchase of Books and other services</u> -----	15

School Vision

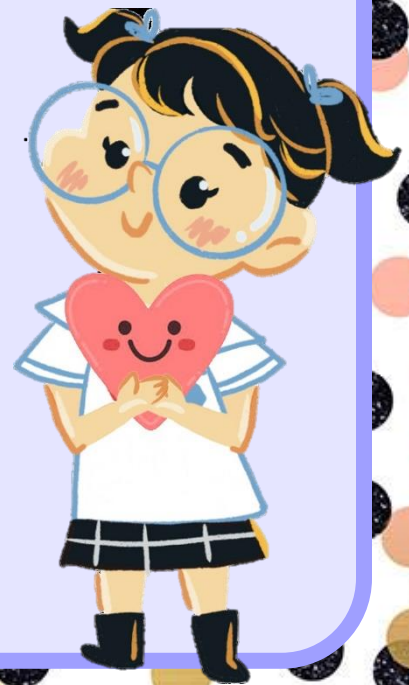
Every Seng Kang
Primary student
an Inventive Thinker,
a Confident Leader
and a Gracious Citizen

School Values

Graciousness
Integrity
Resilience
Confidence

School Mission

Nurturing self-directed
learners with inquiring
minds, anchored on
moral values to lead,
care and serve



OUR CORE LEARNING DISPOSITIONS

There are 4 key Learning Dispositions that we seek to develop in every student: Curiosity, Open-mindedness, Responsibility and Enthusiasm (CORE). These Learning Dispositions are positive behaviours and attitudes towards learning which we strive to imbue in our children. They are important for the children in their journey as life-long learners.

<p>Question, Explore, Reflect</p>  <p>CURIOSITY</p>	<p>Be Gracious, Be Receptive</p>  <p>OPEN-MINDEDNESS</p>	<p>Be Prepared, Be Safe, Be Ethical</p>  <p>RESPONSIBILITY</p>	<p>Participate, Share, Critique</p>  <p>ENTHUSIASM</p>
<p>Ask questions to deepen understanding</p> <p>Respond to issues by providing ideas or solutions</p>	<p>Receptive to ideas shared by peers</p> <p>Cooperate with peers and teachers</p> <p>Act on feedback and use it to improve performance</p>	<p>Be prepared for learning</p> <p>Be punctual for school and submit work on time</p> <p>Be safe and respectful online</p>	<p>Listen attentively</p> <p>Participate actively in lessons</p>

[Click to return to top](#)

GENERAL INFORMATION

SCHOOL HOURS

Day	Start Time	Dismissal Time
Thursday and Friday (2 and 3 January)	7.30 a.m.	Primary 1: 1.00 p.m. Primary 2: 1.25 p.m. Primary 3 to 6: 1.30 p.m.
Monday to Friday (6 January onwards)	7.30 a.m.	Primary 1 and 2: 1.25 p.m. Primary 3 to 6: 1.30 p.m.

You may visit our school website for more details on School Hours:

<https://www.sengkangpri.moe.edu.sg/about-us/General-Information/School-Hours/>



ARRIVAL PROCEDURES FOR P1 STUDENTS

All students should report to school **by 7.25 a.m.** National Anthem will start at 7.30 a.m. Students are considered late after 7.30 a.m.

P1 students can only enter the school via **Gate 2A** on **2 January 2025**.

P1 students can also enter school via Gate 3A (back gate) from 3 Jan onwards.



Refer to [page 12](#) for map

Students will measure their temperature using their personal thermometers daily upon arrival in the classroom. **Your child will be given a thermometer at the beginning of the year. Please label your child's name on the thermometer.** Thermometer must be brought to school every day. If your child loses the thermometer, please purchase a new one for him/her.

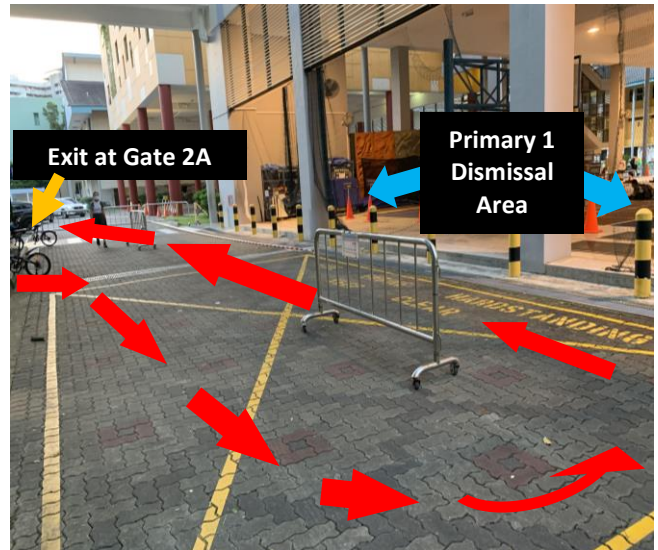
[Click to return to top](#)

DISMISSAL PROCEDURES FOR P1 STUDENTS

	School Dismissal Time
School dismissal during orientation days on 2 January and 3 January 2025	At 1.00 p.m. (from the basketball court)
Daily school dismissal time from 6 January onwards	At 1.25 p.m. daily (from the basketball court)

(a) Students picked up by parents or caregivers

Parents or caregivers will pick their child / ward up ONLY at the **basketball court** and exit via **Gate 2A**. If parents / caregivers are late in picking their child / ward, the child will wait in the General Office.



Parents / caregivers to pick your child / ward from the areas indicated by the blue circles

(b) Students taking school bus

School bus will leave the school after 1.40 p.m.

(c) Students going home with siblings

Your P1 child / ward will wait at the basketball court for his/her elder sibling.

[Click to return to top](#)

RECESS

Recess for P1 students will be from **9.00 a.m. to 9.30 a.m.**

If your child prefers to buy food from the canteen stalls, we recommend giving your child **about \$3.00** on a daily basis to help him/her manage his/her spending.

SNACK BREAK

Students will have a 10-minute Snack Break between 11.00 a.m. and 12.30 p.m.

Please note that only dry healthy food (e.g. biscuits, bread and fruits such as an apple) is allowed. Students are encouraged to pack their snack in a lunch box. Do note that students will not be allowed to go to the canteen during Snack Break.

SMALL BAG FOR RECESS

Students are encouraged to have a small bag for recess to carry the following items with ease and reduce the possibilities of misplacing them.

Items to bring for recess:

- tissue paper
- wet wipes
- hand sanitiser
- water bottle
- recess items (food container/food – optional)

All personal items should be **labelled with your child's/ward's full name and class**. Your child's/ward's **wallet should be placed in his/her pocket at all times**.

HAND TOWEL

All Primary 1 students are encouraged to bring a small hand towel to wipe themselves after PE. The hand towel should be washed and changed daily.

[Click to return to top](#)

COMMUNICATIONS

HOME-SCHOOL COMMUNICATION

The main mode of communication between school and parents will be via the Parents Gateway (PG) mobile app. Notifications on school programmes and activities will be made via PG. General announcements from MOE will also be sent to parents via PG. The app allows parents to perform a range of administrative functions including giving consent for school programmes and activities, as well as declaration of travel plans. Please turn on notifications and check Parents Gateway to get the latest updates.

To perform a simple one-time onboarding process, click on the link below for the step-by-step guide.

<https://www.sengkangpri.moe.edu.sg/quick-links/Parents/Parents-Gateway/>



Our school website, Facebook and Instagram are other platforms for you to stay updated on our school's events and programmes. There is also a list of parents' resources on our school website which may be helpful for you. Click on the link below to access the resources.

<https://www.sengkangpri.moe.edu.sg/quick-links/Parents/permalink/>



COMMUNICATION WITH TEACHERS

Our children do best when schools and parents work hand in hand to support them. Having regular conversations with teachers in both academic and non-academic areas will help you better guide your child's development. The following are various ways you can communicate with the teachers:

- Write in your child's/ward's Student Handbook
- Email the teacher
- Call the school and leave a message for the teacher to return your call
- Fix an appointment with the teacher if you want a face-to-face meeting

In view of work-life harmony, our teachers are not expected to give their personal mobile number to parents. We seek your understanding that teachers are not expected to return calls or meet parents after 5.00 p.m.

OFF TO SKPS! PRIMARY ONE PARENT BRIEFING 2025

This session aims to connect with parents and share about home-school partnership in SKPS.

Date: 2 January 2025 (Thu)

Time: 7.45 a.m. to 11.00 a.m.

Venue: Seng Kang Primary School

More details will be released nearer the event. Please keep this day available.

STUDENTS' USAGE OF SMART WATCHES AND PHONES

Students are not allowed to bring handphones and smart watches to school. They are to use the phone in the General Office if they need to contact their parents.

[Click to return to top](#)

PREPARING FOR SCHOOL

Write your child's name and class legibly in **ink on the cover of each book, worksheet and file. Label all your child's stationery and items, including water bottle and uniforms.** Use the format below.

E.g. 1 Lee Meng Wee 1 Faith	E.g. 2 Siti Natasha 1 Joy	E.g. 3 Darenjit Singh 1 Courage	E.g. 4 Jasmine Lau Xin Yi 1 Confidence
--	--	--	---



Things to bring every day

1. pencil case with 3 sharpened pencils, an eraser, a ruler and a sharpener
2. a box of coloured pencils
3. a thermometer*
4. a storybook
5. SKPS Communication & Homework File
6. Student Handbook*
7. mini whiteboard and marker

** Items will be given to the students when school starts*

Timetable will be given on the second day of school. From 6 January onwards, students to pack their school bags according to the timetable given by their form teachers.

Attire

	Boys	Girls
PE Attire	PE T-shirt (tugged in) PE shorts 	PE T-shirt (tugged in) School skirt worn over PE shorts 

Please ensure your child wears his/her temporary name tag with lanyard daily. Once your child receives his/her name tags, please iron them on each of his/her PE T-shirts as shown below.



Name tags	To be purchased from the school bookshop Must be ironed onto each PE shirt
School socks	Must be black with SKPS printed on them
School shoes	Must be all black

For Girls

Hair accessories	Must be black
Long hair	Tied neatly in a ponytail or two plaits
Long fringe	Clipped up / use a hairband or cut short above eyebrows
Earrings	Small ear studs (black, gold, silver only)

[Click to return to top](#)



Tips For Parents

**in preparing
your child for
primary school**

Entering primary school is a big step in a child's life, and one that may be daunting.

Transition is a process and not a one-off event. It is the beginning of a partnership between parents and the school to provide a positive learning experience for our children.

Changes your child should expect

There are several key changes that your child will experience as they move on to primary school from kindergarten.

Holistic assessments

Longer school hours

Bigger classes

Larger school compound



Independence

Your child will have to be more independent in primary school. This includes becoming a more independent learner. Your child will also need to learn to buy his / her own food from the canteen.

Here are some tips to prepare you and your child for Primary One school life:

Tip 1: Talk to Your Child

You can create excitement and eagerness by engaging your child in conversations about school life. Ask open-ended questions, not just about homework.

Tip 2: Prepare Your Child

Bring your child to the school to have a look. This would help him/her to be mentally prepared. You can also visit the school website with him/her to explore.

Tip 3: Keep Line of Communication Open

Giving the teachers and allied educators as much information about your child can go a long way in helping your child adjust to life in primary school. When listening to your child's concern, always confer the information with your child's form teacher to have a balanced view.



Tip 4: Read with Your Child

Reading is beneficial. It sparks your child's imagination and stimulates curiosity. The ability to read independently gives your child the confidence and motivation in learning. For a start, you can read with your child. It not only allows you to bond with him/her but also helps nurture his/her habit of reading.

Tip 5: Manage Your Child's Screen Time

Real-time interactions with family members and others are much better for your child's development in social and communication skills which comes in handy in his/her primary school endeavours. Such interactions beat facing mobile devices which may do more harm than good. It is important to manage your child's screen time for the benefit of his/her well-being.

Tip 6: Encourage Independence

A) **Understand the Class Timetable**

Help your child understand the longer school hours and new routines.

B) **Introduce the Concept of Money**

Teach your child the concept of money when you give him/her an allowance.

C) **Instil Responsibility**

Coach your child in packing his/her schoolbag according to the timetable. Your child should always have the essential stationery in his/her pencil case. Teaching responsibility from the first day sends a positive message to your child. We appeal to parents not to bring forgotten items for your child but to let him/her take responsibility for his/her actions. For safety reasons, your child is discouraged from using a trolley-school bag.

For more tips on helping your child transit to Primary One smoothly, please refer to Ministry of Education's "Parent-Child Activity Book - Tips & Activities for a Great Start to Primary School".

[Parent kit | MOE](#)

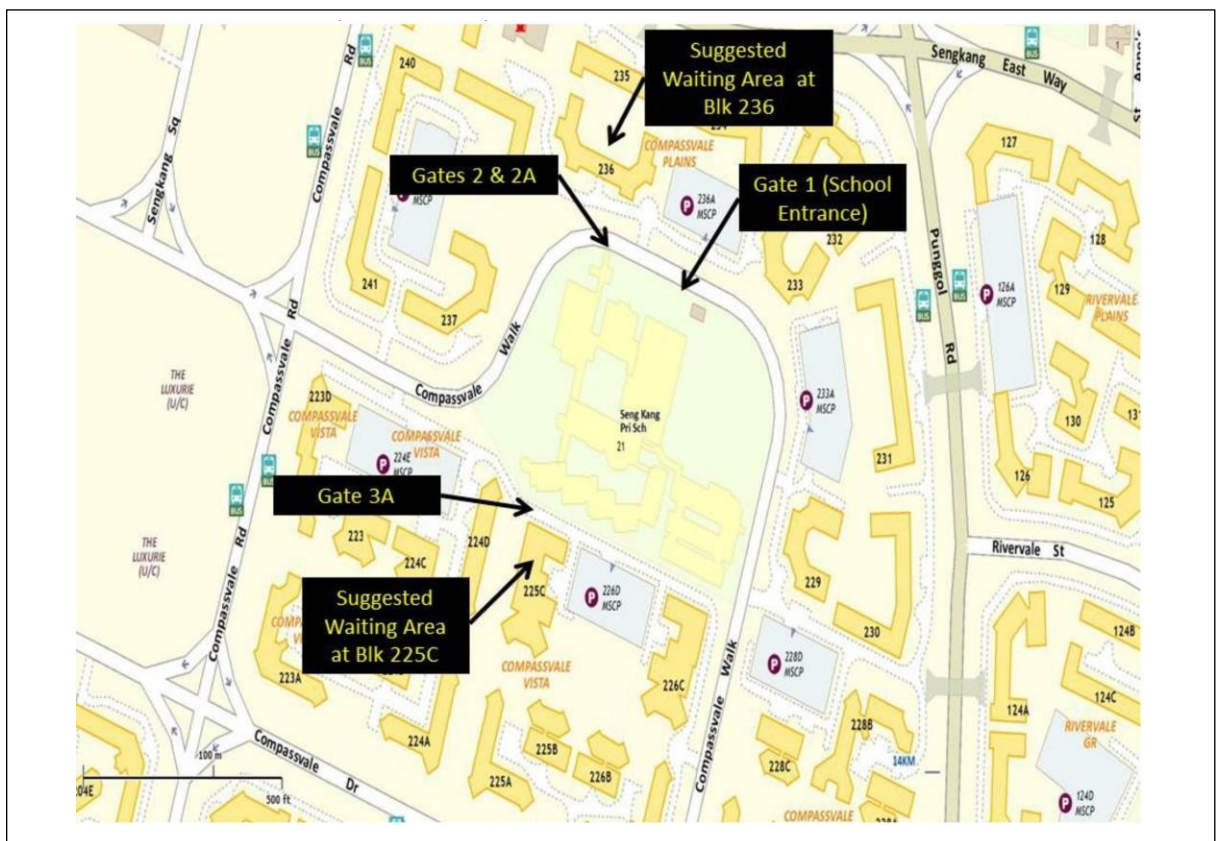


[Click to return to top](#)

SCHOOL GATES OPERATING HOURS

Pedestrians	
Gate 2A & 3A	6.45 a.m. to 7.25 a.m.
Vehicles	
Gate 1	6.30 a.m. to 7.25 a.m.
Gate 2A	
*P1 students will be dismissed <u>only</u> at Gate 2A	
Thursday and Friday (2 January – 3 January)	1.00 p.m. to 2.00 p.m.
Monday – Friday (from 6 January onwards)	1.25 p.m. to 2.00 p.m.

For more details and photo illustrations, please visit our school website:
<https://www.sengkangpri.moe.edu.sg/about-us/General-Information/School-Gate/>



[Click to return to top](#)

[Return to Arrival Procedures](#)

[Return to Dismissal Procedures](#)

SCHOOL ATTIRES

	Recommended number of sets to purchase
School skirt (for girls)	3
PE attire	3 Colour of PE attire should be in accordance to the house colour assigned to your child

Uniform Supplier: Jeep Sing Fashion

Blk 4012 Ang Mo Kio Ave 10, Techplace 1 #01-09, Singapore 569628

Tel: 6456 3198

Online Purchase

<https://jeepsinguniform.com/collections/seng-kang-primary-school>



Walk-in Purchase at Retail Outlet

- Mode of payment: Cash, Nets, PayNow or DBS Paylah!
- Operating hours: Monday - Friday : 10.00 a.m. – 6.00 p.m.
(Lunch break and sanitisation of store: 1.00 p.m. to 2.00 p.m.)
Saturday: 10 a.m. – 2 p.m.
Closed on Sunday and Public Holidays

Purchase in School

- Dates: 4, 5, 6, 11, 12, 13, 14, 17, 23, 26 and 27 Dec 2024
- Time: 9.00 a.m. to 3.00 p.m. (Lunch break from 12.00 p.m. to 1.00 p.m.)
- Mode of payment: Cash, PayNow or Paylah!

[Click to return to top](#)

SCHOOL TEXTBOOKS & STATIONERY

Purchase of textbooks and stationery can only be made online. Our school bookshop is open for self-collection on the stipulated dates given on the website.

School textbooks and uniform will also be available for sale in the school on the following dates and time during **the first two weeks of 2025**.

Date	Time
6, 7, 8, 13, 14 and 15 Jan 2025	2 p.m. to 3.30 p.m.

After 15 January 2025, purchasing of books will be available only on **Wednesdays** at Seng Kang Primary bookshop from **2.00 p.m. to 3.30 p.m.** while purchasing of uniform will be from the outlet or online.

Please note that all books should be purchased before term starts.

For safety reasons, students are not encouraged to use trolley bags.

Pacific Bookstores Pte Ltd

Email: sales@pacificbookstores.com

Online purchase: <https://www.pacificbookstores.com/>



SCHOOL BUS SERVICES

If you require school bus services, you may make arrangement with the school bus provider.

RushOwl Singapore Pte Ltd

Website: <https://rushowl.app/>

Tel No. : 6871 8817

Email Address: school@rushowl.sg

YMCA STUDENT CARE CENTRE (YMCA SCC)

If you require Student Care services, you may make arrangement with the YMCA SCC

Tel No. : 9151 3590

Email: sksc@ymca.edu.sg

Website: <https://www.ymca.org.sg/education/ymca-education-services/>



[Click to return to top](#)



Seng Kang Primary School

Address:

21 Compassvale Walk
Singapore 545166

Tel: 6384 0809

Fax: 6384 0839

www.sengkangpri.moe.edu.sg



SCAN ME

FOLLOW US ON



Instagram

www.facebook.com/SengKangPrimarySchool
<https://www.instagram.com/sengkangprimaryschool/>

